

**Interreg**  
*Mediterranean*



**PROGRAMME MANUAL**

# INTERREG MED PROGRAMME STRATEGIC FRAMEWORK

Programme cofinancé par le Fonds Européen  
de Développement Régional (FEDER)

Programme cofinanced by the European Regional  
Development Fund (ERDF)

# 1. Background and programme objective

## 1.1.1. Overview of Interreg MED Programme

### OVERALL OBJECTIVE OF THE PROGRAMME

The overall objective of the MED programme is to promote sustainable growth in the Mediterranean area by fostering innovative concepts and practices (technologies, governance, innovative services...), reasonable use of resources (energy, water, maritime resources...) and supporting social integration through integrated and territorially based cooperation approach.

### A PROGRAMME LEARNING FROM ITS HISTORY

The new Interreg MED Programme builds on the experience and lessons learnt from the previous 2007-2013 period, during which more than 4000 outputs have been delivered.

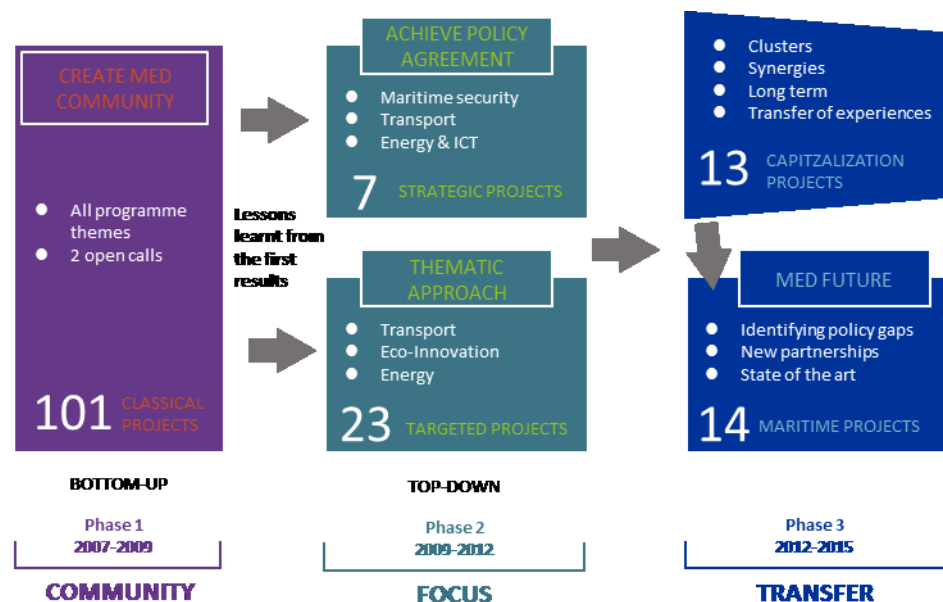


FIGURE 1: MED 2007-2013 ARCHITECTURE

### THE NOVELTIES THAT THE NEW PROGRAMME BRINGS

The Interreg MED 2014-2020 is:

- **Wider** – Inclusion of 3 new regions – Lisbon and Tejo Valley, Midi-Pyrenees and Valle d’Aosta
- **Bigger** – EUR 224 million ERDF and EUR 9 million IPA funding, co-financing rate 85%<sup>1</sup>
- **More focused** – three thematic axes, one governance axis
- **Closer** to the territory – special attention to the private sector (SME) and civil society
- **More mature** – capitalising from previous experiences
- **More connected** – synergies with other European programmes/instruments/strategies (Interreg Europe, ENI MED, SUDO, Atlantic, H2020, EUSAIR ...)

### 1.1.2. Programme Area

- Eligible geographic area extends over some 860 000 km<sup>2</sup> (around 20% of the EU area).
- More than 15 000 kilometres of a maritime coastline
- Home for more than 122 million people (24.3% of the EU27 population)
- 142 people per km<sup>2</sup> in the MED space compared with 116.3 in Europe as a whole. This average however masks significant disparities: population densities vary considerably from 1 318 people/km<sup>2</sup> in Malta to 23.9 people/km<sup>2</sup> in Portugal’s Alentejo region
- Extremely diverse natural, physical and geographic characteristics

FIGURE 2: PROGRAMME AREA



### Interreg MED 2014-2020 COOPERATION AREA

Gibraltar  
United Kingdom



Ceuta  
Spain



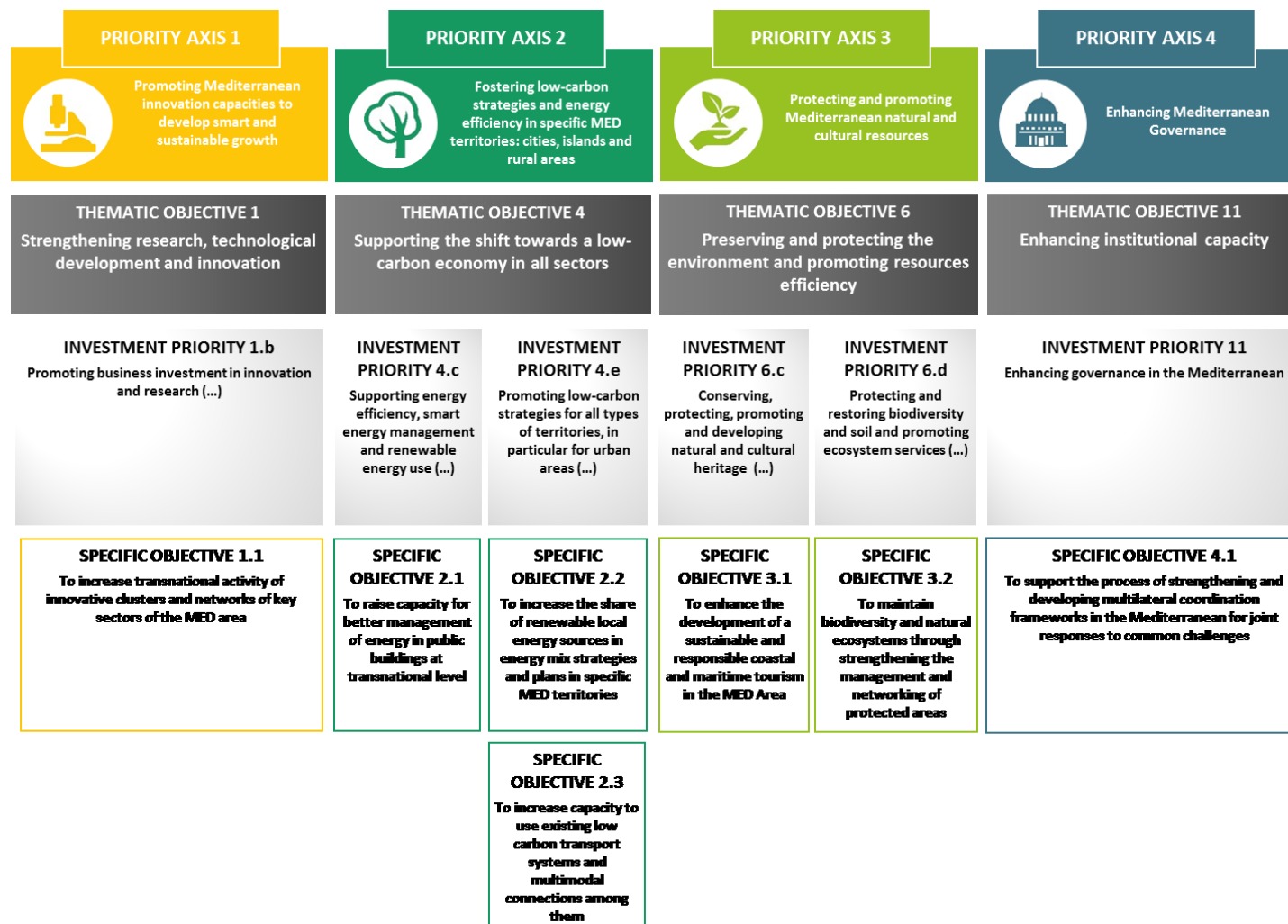
Melilla  
Spain



<sup>1</sup> Co-financing rate of 50% for the SME partner under GBER.

### 1.1.3. Priority axes and specific objectives

FIGURE 3: PRIORITY AXES AND SPECIFIC OBJECTIVES



## 1.1.4. Programme budget

The Interreg MED Programme is co-financed by the European Regional Development Fund (ERDF) and by the Instrument for Pre-Accession assistance funds (IPA). Both are supplemented by match funding from projects (national counterpart).

The ERDF contribution to the programme amounts to around EUR 224.3 million ERDF.

The IPA contribution to the programme amounts to around EUR 9.3 million IPA.

The overall programme budget, including also the national counterpart, amounts to around EUR 275.9 million.

The budget allocation according to priority axes is provided in the table below.

**FIGURE 4: BUDGET ALLOCATION BY PRIORITY AXIS**

PRIORITY AXIS	FUND	UNION SUPPORT (EUR)	NATIONAL (PUBLIC AND PRIVATE) COUNTERPART (EUR)	TOTAL BUDGET (EUR)	%
Priority Axis 1: Promoting Mediterranean innovation capacities to develop smart and sustainable growth	ERDF	71.783.208	12.667.625	84.450.833	32%
	IPA	2.993.851	528.327	3.522.178	
Priority Axis 2: Fostering low-carbon strategies and energy efficiency in specific MED territories: cities, islands and rural areas	ERDF	44.864.505	7.917.266	52.781.771	20%
	IPA	1.871.158	330.205	2.201.363	
Priority Axis 3: Protecting and promoting Mediterranean natural and cultural resources	ERDF	76.269.660	13.459.352	89.729.012	34%
	IPA	3.180.966	561.347	3.742.313	
Priority Axis 4: Enhancing Mediterranean Governance	ERDF	17.945.801	3.166.907	21.112.708	8%
	IPA	748.462	132.082	880.544	
Priority axis 5: Technical Assistance	ERDF	13.459.351	3.364.839	16.824.190	6%
	IPA	561.346	99.062	660.408	
<b>Total</b>	ERDF	224.322.525	40.575.989	264.898.514	100%
	IPA	9.355.783	1.651.023	11.006.806	
	ERDF+IPA	233.678.308	42.227.012	275.905.320	

The co-financing rate for the **ERDF partners** will be of 85%.

The co-financing rate for the SMEs participating under Article 20 of the General Block Exemption Regulation (Commission Regulation (EU) No 651/2014) will be of 50% (only ERDF)<sup>2</sup>.

<sup>2</sup> IPA entities under private law not identified as non profit entities are not eligible to the Interreg MED Programme. For this reason, IPA funds cannot co-finance SMEs under the MED Programme.

The co-financing rate for the **IPA partners** will be of 85%.

## 1.1.5. Legal framework and Programme related documents

The relevant documents listed below (non-exhaustive list) are provided on the Interreg MED website <http://www.interreg-med.eu>

### **Programme documents**

- Interreg MED Cooperation Programme document (adopted by the European Commission on June 3<sup>rd</sup>, 2015)
- Interreg MED Programme Strategic Environmental Assessment
- SWOT analysis of the MED territorial cooperation programme
- Thematic Terms of references for each Call for proposals

### **European Structural and Investment Funds 2014-2020: Key regulations**

- **Common provisions regulation (CPR)**

Regulation (EU) No 1303/2013 of the European Parliament and of the Council of 17 December 2013 laying down common provisions on the European Regional Development Fund, the European Social Fund, the Cohesion Fund, the European Agricultural Fund for Rural Development and the European Maritime and Fisheries Fund and re-pealing Council Regulation (EC) No 1083/2006.

- **ERDF Regulation**

Regulation (EU) No 1301/2013 of the European Parliament and of the Council of 17 December 2013 on the European Regional Development Fund and on specific provisions concerning the Investment for growth and jobs goal and repealing Regulation (EC) No 1080/2006.

- **ETC Regulation**

Regulation (EU) No 1299/2013 of the European Parliament and of the Council of 17 December 2013 on specific provisions for the support from the European Regional Development Fund to the European territorial cooperation goal.

- **EGTC Regulation**

Regulation (EU) No 1302/2013 of the European Parliament and of the Council of 17 December 2013 amending Regulation (EC) No 1082/2006 on a European grouping of territorial cooperation (EGTC) as regards the clarification, simplification and improvement of the establishment and functioning of such groupings.

- **De Minimis Regulation**

Commission Regulation (EU) No 1407/2013 of 18 December 2013 on the application of Articles 107 and 108 of the Treaty on the Functioning of the European Union to *de minimis* aid.

- **General Block Exemption Regulation**

Commission Regulation (EU) No 651/2014 of 17 June 2014 declaring certain categories of aid compatible with the internal market in application of Articles 107 and 108 of the Treaty.

- **IPA Regulations**

Regulation (EU) No 231/2014 of the European Parliament and of the Council of 11 March 2014 establishing an Instrument for Pre-accession Assistance (IPA II).

Commission Implementing Regulation (EU) No 447/2014 of 2 May 2014 on the specific rules for implementing Regulation (EU) No 231/2014 of the European Parliament and of the Council establishing an Instrument for Pre-accession assistance (IPA II).

## **Strategic framework**

EUROPE 2020: A strategy for smart, sustainable and inclusive growth, Communication from the Commission, COM(2010)2020 final.

Territorial Agenda of the European Union 2020: Towards an Inclusive, Smart and Sustainable Europe of Diverse Regions, Gödöllő, May 2011.

Sixth Report on Economic, Social and Territorial Cohesion: Investment for jobs and growth. Promoting development and good governance in EU regions and cities, European Commission, July 2014.

## **Macro-regional strategies**

European Union Strategy for the Adriatic and Ionian Region, Communication from the Commission to the European Parliament, the Council, the European Economic and Social Committee and the Committee of the Regions, COM(2014) 357 final

European Council conclusions to elaborate an EU Strategy for the Alpine Region, EU-CO 217/13

Report from the Commission to the European Parliament, the Council, the European Economic and Social Committee and the Committee of the Regions concerning the governance of macro-regional strategies, COM(2014) 284 final

## 1.1.6. Management structures

### **Monitoring Committee**

The Monitoring Committee (MC) is set up by Member States. These integrate the committee together with the Managing Authority, Certifying Authority, Audit Authority as well as social and economic partners.

The Monitoring Committee is responsible for the efficient and qualitative implementation of the Cooperation Programme and progress made towards achieving its objectives and the selection of operations, according to article 12 of the ETC Regulation. For the selection and modification of operations, the Monitoring Committee sets up a Steering Committee, acting under its responsibility. The **Steering Committee**, whose rules of procedures are approved by the Monitoring Committee, is responsible, with the assistance of the Joint Secretariat, for the selection, in each single step of the assessment procedure, and the approval or rejection of changes of all types of projects (uni-module, multi-module, horizontal etc.) under axis 1, 2, 3.

The **Monitoring Committee** is responsible for the final validation of the list of the projects selected by the Steering Committee and the selection and modification of the projects of axis 4 and 5.

Decisions are taken on a consensus basis expressed by each national delegation with one vote allocated per participating country. If necessary, decisions can be made following a written procedure (also on a consensus basis) within the participating States.

#### **Managing Authority**

The Med Programme's Member States have designated as Managing Authority (MA) the Provence Alpes Côte d'Azur Region (France). The MA is responsible for managing and implementing the cooperation programme in accordance with the principle of sound financial management. It is the entity that signs the Subsidy Contracts with the Lead Partners.

The MA supports the work of the Monitoring Committee and the transmission of information it requires to carry out its tasks, in particular data relating to the progress of the cooperation programme in achieving its objectives; financial data, and data relating to indicators and milestones.

#### **Joint Secretariat**

The Joint Secretariat (JS) is a transnational team assisting the Managing Authority, the Monitoring Committee, the Steering Committee and the Audit Authority in implementing the programme. It deals with project applications, provides information to potential beneficiaries about funding opportunities under the Interreg MED Programme and assists beneficiaries in the implementation of operations.

It sets up and maintains contacts with Lead Partners and their partnerships. Ensures at transnational level coordination, follow-up and promotion activities and provides technical support for the preparation of meetings and events at the programme and project level (Monitoring Committees, Transnational Conferences and transnational working groups, Lead Partners seminar, other specific thematic meetings).

#### **Certifying Authority**

This Authority certifies statements of expenditure and applications for payment before they are sent to the Commission; it receives payments made by the Commission and ensures the reimbursement.

It is also responsible for drawing up the annual accounts and ensuring that audits are carried out on the management and control systems, on an appropriate sample of operations and on the annual accounts.

During the programming period 2014-2020, the Spanish Ministry of Finance and Public Administration has been designated as the Certifying Authority.



### **Audit Authority**

Functionally independent from the Managing Authority and the Certifying Authority, the Audit Authority (AA) is responsible for verifying the effective functioning of the management and control system.

The AA is an inter-ministerial commission (CICC) reporting to the Prime Minister, who appoints its members, and is assisted by a group of independent auditors composed of a representative from each State participating in the programme.

The representatives of the participating states to the Group of Auditors, that assist the AA, shall not be involved in any other management or certification activity under the MED programme.

### **Participating States**

Within each participating state, the MED Programme is taken in charge through two specific functions:

- A regulatory function related to the responsibility of each participating state as regards monitoring and control of activities, procedures and expenses of project partners in the respective participating countries
- A function of coordination of the implementation of the programme on national territory and a contribution to the general animation of the programme in relation with the MA and the JS to which they entrusted management

Each participating State can freely organise its national body and has the possibility to set up support bodies such as National Committees as consultative bodies.

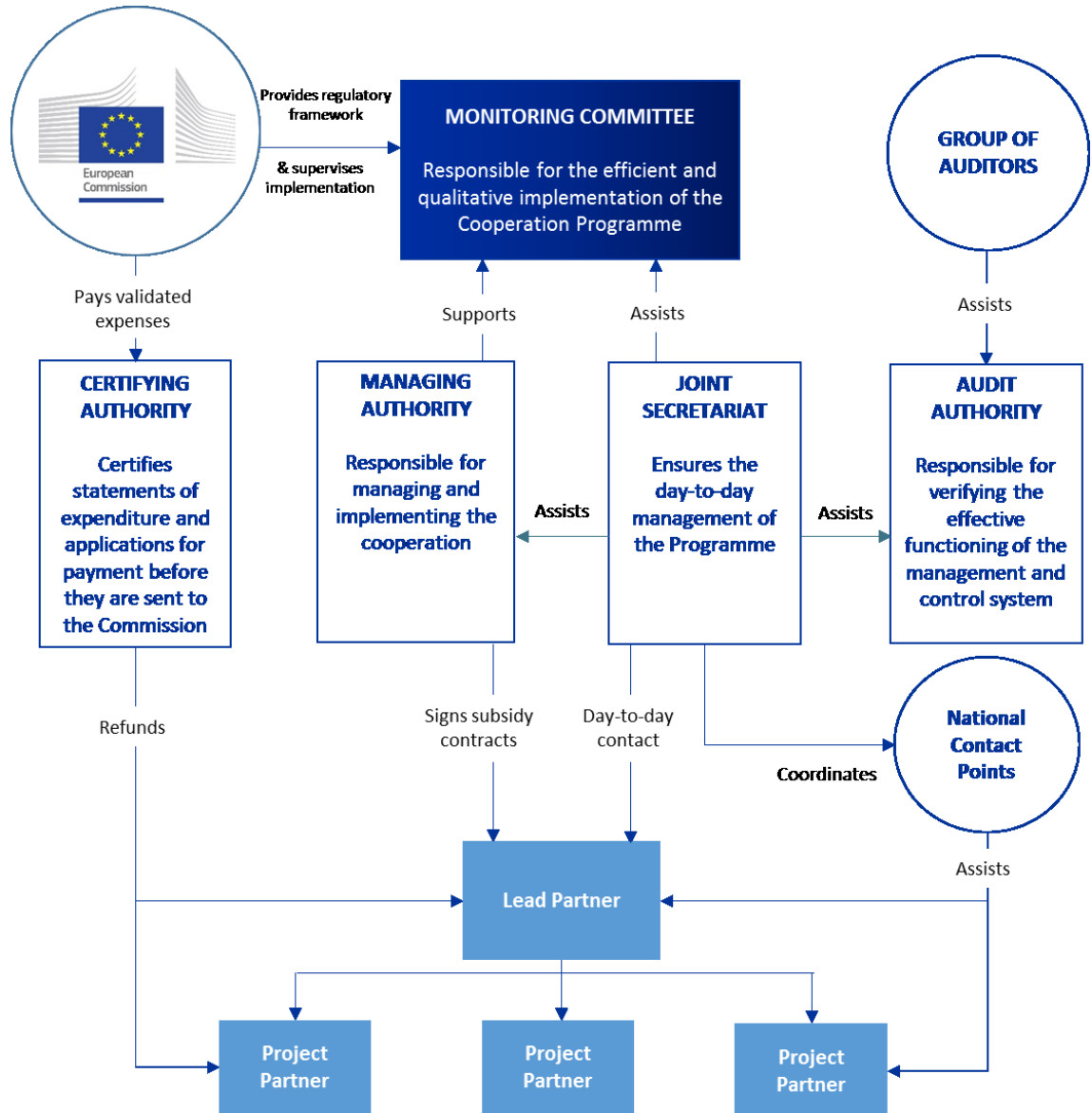
### **National Contact Points**

Set up by each Member State in coherence with their administrative system, the National Contact Points (NCPs) can be individuals or administrative bodies.

Their role is to ensure the transnationality of the programme and help mainstreaming of projects.

They are in direct contact with national stakeholders and provide information on the programme, on the calls for projects and on administrative requirements for the submission of applications. NCPs are coordinated by their National Authorities. Decentralised structures of the programme might also be set up to support the programme implementation.

FIGURE 5: MANAGEMENT STRUCTURES OF THE INTERREG MED PROGRAMME

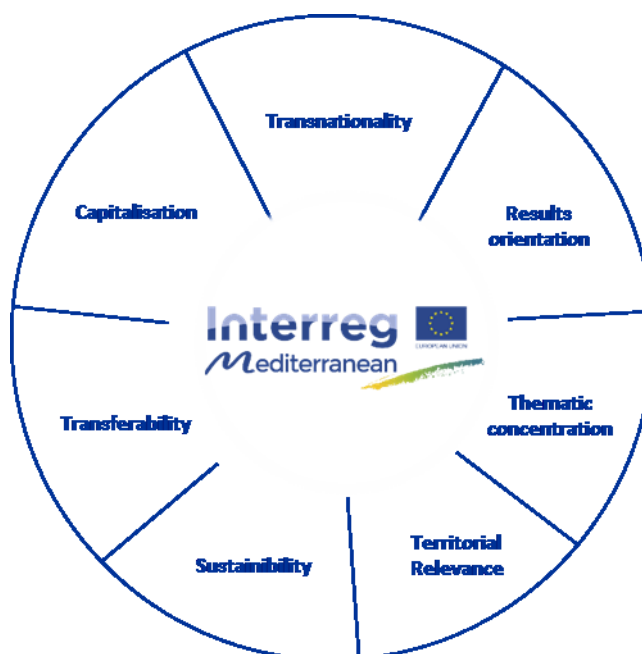


## 2. Key principles

In the period 2014-2020, Interreg MED Programme will promote cooperation between a varied typology of actors of thirteen Mediterranean countries. Our aim lies in optimizing existing results achieved in the previous period as well as facilitating new cooperation frameworks for all partners situated in the programme cooperation area. Accordingly, Interreg MED Programme establishes the following key cooperation principles aiming at consolidating the character of future projects and their related activities.

These fundamental principles represent the identity of the Interreg MED Programme and are coherent with the promotion of development, of good governance and supported by the European Union Cohesion Policy.

**FIGURE 6: FUNDAMENTAL PRINCIPLES OF INTERREG MED PROGRAMME**



### 1.2.1. Thematic concentration

Thematic concentration is one of the leading principles of all Interreg Programmes for the period 2014-2020, as Programmes have been asked to concentrate on a limited number of themes. In this respect, the Interreg MED Programme authorities have chosen 4 thematic objectives amongst the 11 defined by the European Union, with 6 investment priorities. This choice was made on the basis of a SWOT analysis which has led to a definition of common needs, challenges and opportunities for the Programme area. The situation analysis equally took into account development priorities defined at national, regional and local level which have been laid out by the respective Member States in their different strategies and policy documents.

The thematic objectives and investment priorities have been translated into four Programme Priority Axis, which in turn are broken down into seven specific objectives. Both elements are Programme-specific but are consistent with the chosen thematic objectives and investment priorities as defined in the EU Regulations. This constitutes the basis of the Programme strategy.

Project interventions and associated activities should ensure effective influence on, at least, one of the four thematic objectives of reference: *Innovation, Low-carbon Economy, Environment and Governance*<sup>3</sup> (for further information, please refer to [section 1.3](#) of this factsheet related to the Programme intervention logic).

A project expecting to be co-financed by the Interreg MED programme should be widely aligned with one of its thematic objectives. However, it could be possible that related activities, results and outcomes of this project can also contribute to the achievement of other programme objectives under an integrated approach. In contrast, projects addressing thematic aspects different from the four objectives of reference will not take part in the Interreg MED Programme community.

## 1.2.2. Result-orientation

The principle of result-orientation characterises the commitment of Interreg MED Programme to the long-term development of the Mediterranean area. Besides the thematic concentration, the European Union required programmes of the 2014-2020 programming period to set in place a result-oriented intervention logic demonstrating their clear contribution to the objectives of the Europe 2020 strategy and to the achievement of economic, social and territorial cohesion. Programmes are to fund projects which demonstrate the translation of outputs arising from “soft” actions (not infrastructures) into concrete, visible and sustainable results. Those have to lead to a change of the initial situation and should bring a concrete response to persistent problems identified on the cooperation space of the programme. In order to maximise the impact, Interreg MED Programme results should ensure effectiveness and be achieved in a measurable and relevant way<sup>4</sup>.

To this end, for each specific objective, the programme has defined expected **results** which reflect the changes the programme seeks to achieve for the entire programme area through the implementation of projects. Results and related changes are measured through **results indicators** linked to each programme specific objective. Selecting clear result indicators facilitates understanding of the problem and the policy need and will facilitate a later judgement about whether or not objectives have been met. In this context, baselines, milestones and cumulative targets have been set for result indicators, to allow measuring the change achieved in the whole MED area during the Programming period.

Accordingly, projects and partners should integrate clear strategies which allow to define and obtain results with ambitious but realistic nature, scope and impact. It is worth mentioning that the Programme strategy can only be successful if projects contribute to realising the change the Programme envisages when achieving their own results. This implies a shift in the approach of projects from focusing on project activities to focusing on the results to which these activities

---

<sup>3</sup> See: Article 9 of Regulation (EU) No 1303 /2013 and Interreg MED Cooperation Programme 2014-2020, section thematic objectives

<sup>4</sup> See Article 16 of Regulation (EU) No 1299 /2013 and Interreg MED Cooperation Programme 2014-2020, section indicators

lead, whereas project results are expected to be coherent with the Interreg MED Programme objectives and directly contributing to Programme result indicators.

### 1.2.3. Transnationality

Transnationality is the leading principle of all Interreg MED Programme interventions. This principle promotes the constitution of partnerships composed by structures of at least four different programme countries.

Projects implementation should create not only individual impacts on specific territories but also a collective effect addressing a Mediterranean vision. Interventions facilitated by Interreg MED Programme should ensure joint approach, common analysis, correlations and synergies between obtained results<sup>5</sup>.

Therefore, projects are expected not only to strive towards changes in targeted territories but also to react collectively towards common Mediterranean challenges. Projects belonging to the Interreg MED Programme should guarantee that achieved results are obtained in transnational dynamics, common learning, sharing of knowledge, adaptation process and improvement of existing results under a cooperative attitude. In contrast, Interreg MED Programme will NOT support projects aiming to develop individual actions in represented territories with no relation to synergies and Mediterranean added value.

### 1.2.4. Territorial relevance

This principle represents the concretisation of Interreg MED Programme actions on the development of its different territories. Projects and activities should be territorially relevant by addressing solutions and motivating development of Islands, urban, coastal and rural areas with a potential mainstreaming to the whole Mediterranean area<sup>6</sup>.

Under this context, projects territorially relevant are those who engage a significant representation of civil society pursuing the development of their common space of interaction. This territorial relevance should be also present in the project capacity to facilitate the transmission of results to a wider territory under a Mediterranean approach.

On the other hand, territorial relevance should not be demonstrated “exclusively” by the status of the partners (e.g. national, regional and/or local structures) or by the automatic addition of these representations. Individual and collective representation of partners within a specific project can mean a potential territorial coverage but the “relevance” should be demonstrated in the quality of working plans, nature of activities and measures proposed to deal with challenges of targeted territories.

---

<sup>5</sup> Article 12 EU regulation 1299/2013 and also Interreg MED Cooperation Programme 2014-2020, section: “Organisation of the assessment and selection of operations”.

<sup>6</sup> Interreg MED Cooperation Programme 2014-2020, section: “Integrated approach to territorial development”.

## 1.2.5. Sustainability

The principle of sustainability is adopted by the Interreg MED Programme according to the promotion of sustainable growth established by the European Union 2020 Strategy. Under this context, projects taking part in the Interreg MED Programme should integrate the ability to carry out their activities without significant deterioration of the environment and depletion of natural resources on which human well-being depends.

In order to achieve sustainability, projects should adopt methods that allow identifying the most suitable environmental-friendly practices over the project operation and related activities<sup>7</sup>. Interreg MED Programme also reflects this principle in all its thematic choices, namely: innovation, low carbon economy, sustainable tourism and environment. Projects not integrating this principle of sustainability are those who do not show any sensibility towards implementing actions respectful with the environment.

## 1.2.6. Transferability

This principle represents the Interreg MED Programme commitment to ensure continuation and longer term impact of the activities it supports. Transferability refers to the degree to which the project main outputs can be generalised or transferred to other contexts or settings. Accordingly, partners, projects and associated activities should guarantee the capacity to generate added value even after the end of their project. In practice, Interreg MED Programme will favour projects and activities able to address specific challenges not only during projects duration but also throughout ambitious handover strategies able to guarantee the continuation, share and replication of activities and associated results.

The nature, quality and scope of projects and associated activities should be evaluated not only in function of quality criteria but also according to the capacity of the project to ensure the extensive use and transferability of related products. Also, projects should clearly identify the target groups to whom the actions will be targeted.

Transferability should not be considered as fully accomplished just by the fact of integrating dissemination actions all over the project operation. Communication and capitalisation aspects represent a fundamental support but they cannot guarantee by themselves that project results are transferable and transferred.

---

<sup>7</sup> European Union Strategy Official website: [http://ec.europa.eu/europe2020/europe-2020-in-a-nutshell/priorities/index\\_en.htm](http://ec.europa.eu/europe2020/europe-2020-in-a-nutshell/priorities/index_en.htm) and also see: Interreg MED Cooperation Programme 2014-2020, section: SWOT analysis and Framework and guidelines for the implementation of the 2014-2020 Interreg MED Programme.

## 1.2.7. Capitalisation

*In nature nothing is created, nothing is lost, everything changes.*  
Antoine Lavoisier (1743 – 1794)

### THE MEANING OF CAPITALISATION

The underlying principle of European Territorial Cooperation (ETC) programmes is that cooperation serves either to improve what exists or to create new and innovative solutions, based on acquired experiences. A simple description of “capitalisation” is tightly connected to this idea of **taking farther existing assets**. In that sense, it is a key issue for gaining the full value of experiences of individual or thematic communities of projects.

For the Interreg MED Programme, **capitalisation is a continuous process** and shapes in a direct or indirect manner all the dimensions of the projects’ lifecycle.

### WHAT FOR?

For a long time capitalisation has hardly been considered in a structured way by the programmes or the projects (with specific activities or focus). The assumption is that after several generations of ETC programmes, a lot of energy could have been applied in a more efficient way and with stronger results, just by taking a serious look on what previous initiatives had delivered.

Considering capitalisation as an inherent element of the programme dynamic responds, on one hand, to the need for a **more efficient implementation of the projects** and, on the other, to aim for **more solid results**.

### HOW?

This concept of capitalisation requires the establishment of certain procedures and tools favouring the stated objectives. At programme level, the approach concentrates on:

- **Creation of project communities**, or grouping of projects and experiences according to common issues, in order to gain a broader view of results and overcome fragmentation of messages to the relevant stakeholders;
- **Systematisation of knowledge**, or the development of the accessibility to the project outcomes facilitating access to results over time;
- **Mainstreaming**, or efforts to promote institutional uptake of results, primarily through incorporation into regional / national policies.

In concrete terms, the programme will promote this approach through:

- Organisation of Joint Secretariat (JS) in thematic poles;
- A close follow-up of projects by the JS with a qualitative approach;
- Redesign of project Application Forms with clear and shared definitions (of activities, outputs, etc.), well identified starting point (outputs and experiences to be capitalised) and foreseen deliverables;

- Launching of specific modules for capitalisation projects (M3), dedicated to improve the geographical and/or technical potential of a set of outputs from previous initiatives;
- Launching of horizontal projects, in charge of providing a common platform of diffusion, treatment and access to the results of the different communities of projects;
- Launching of a “mainstreaming platform” through Axis 4 for governance;
- Encouraging national and regional contact points to have an active role as communicating vessels between projects and decision making levels;
- Closer contact between the Programme structures and other Interreg and thematic programmes.

In this context, projects are expected to:

- Dilute their boundaries to facilitate the integration at the thematic group level (modular projects working together with a horizontal project, please refer to the factsheet “MED horizontal projects” for further information);
- Integrate the work in groups in the essence of the project, nourishing the flux of information between the different types of projects – modular, horizontal, axis 4 platform;
- Conceive and deliver outputs adapted to further appropriation by their end users or future initiatives (regarding format, content and dissemination strategy);
- Involve stakeholders (end-users and decision makers, in particular) from the beginning;
- Contribute to the formative evaluation of the forthcoming programmes and projects.

## 1.2.8. Horizontal principles

### ENVIRONMENT PROTECTION AND SUSTAINABLE DEVELOPMENT

Sustainable development and environment protection are integrated as horizontal principles in the cooperation programme. Therefore all projects supported by the programme will have to respect the relevant policies and rules.

Project applicants have to describe the contribution to sustainable development, explaining how the sustainability principle is anchored within the project design and planned activities.

Further, applicants have to specify which possible environmental effects (positive, neutral or negative) the project will likely have considering the following aspects: water, soil, air and climate, population and human health, fauna, flora and biodiversity, cultural heritage and landscape. This is of particular relevance in case of pilot investments.

Projects submitted under any priority axis are strongly encouraged to incorporate activities for tackling environmental concerns and reducing their environmental and carbon footprint, for example by:

- Including environmental criteria in procurement procedures;
- Giving preference to environmentally-friendly mobility options (in particular for short travel distances);
- Considering online meetings instead of face-to-face meetings where possible;



- Organising conferences and events in a sustainable way (e.g. by combining different meetings in one place, reducing printing and using recyclable materials, using video conference facilities, etc.);
- Considering resource efficiency and the use of renewable energy at all levels;
- Making use of regional supply chains (reducing supply chain length and CO2 emissions).

#### EQUAL OPPORTUNITIES AND NON-DISCRIMINATION

Projects have to ensure that the activities implemented are in line with the principle of equal opportunities and do not generate discrimination of any kind (sex, racial or ethnic origin, religion or belief, disability, age or sexual orientation). Applicants have to describe the contribution to equal opportunities and non-discrimination, explaining how the equal opportunity principle is anchored within the project design and planned activities.

Besides actions of projects which explicitly address the reduction of disparities, all projects submitted under any priority axis are encouraged to incorporate measures for promoting equal opportunities and preventing any discrimination, for example by actively tackling concerns of demographic change and inequality.

#### EQUALITY BETWEEN MEN AND WOMEN

Projects have to ensure that the activities implemented are in line with the principle of equality between men and women and do not generate discrimination of any kind. Applicants have to describe the contribution to this principle, explaining how the equality principle is anchored in the project design and planned activities. Projects submitted under any priority axis are encouraged to incorporate measures for integrating the gender perspective, for example by integrating equal participation of women and men and/or actively promoting gender mainstreaming.

## 3. Programme Intervention Logic

### 1.3.1. Reminder of the overall strategic framework for 2014-2020 programming

- **Europe 2020 strategy**
  - Territorial Agenda 2020
    - **EU cohesion policy 2014-2020**
      - European Territorial Cooperation
        - Transnational Cooperation (Interreg V-B)
          - **Interreg MED Programme 2014-2020**

The Interreg MED Programme is a European Territorial Cooperation (ETC) Programme / Transnational cooperation strand (Interreg V-B) and as such is an integral part of the European Union's Cohesion Policy, which is the principle tool to implement the EU 2020 Strategy. The EU 2020 Strategy is the EU's growth and jobs strategy and the overall framework to which all adopted EU policies should contribute.

Several overarching principles guided the programming process for the 2014-2020 period. These principles have been inherited in the programme design and supported the strategic orientation of the programming process. Those principles are<sup>8</sup>:

- **Supporting the delivery of Europe 2020 strategy goals:** The link to the Union strategy for smart, sustainable and inclusive growth is ensured through the definition of 11 thematic objectives (TOs) (Article 9, CPR) and the requirement for thematic concentration (Article 5, ETC): Programmes were asked to choose up to 4 thematic objectives for the definition of Programme priority axes, further broken down into investment priorities (chosen to define the Programme Specific Objectives).
- **A common understanding of the ETC objective:** Ex post evaluation of the Interreg III (2000-2006) and ETC 2007-2013 programmes revealed that it was difficult to capture the added value and achievements of ETC programmes. Several reasons were identified for this, and one of them was the lack of clarity of programme objectives at both EU and programme level. For 2014-2020 period, transnational cooperation should aim to strengthen cooperation by means of actions conducive to integrated territorial development linked to the Union's cohesion policy priorities.
- **Contributing to the overall – economic, social / societal and territorial – cohesion of the EU** by supporting cohesion of transnational programme area and by working together with common assets and/or challenges. Through these, programmes create: common identity, integrated physical space, services and communities, balanced development, solutions for

<sup>8</sup> Inspired from INTERACT "Programming Process 2014-2020: Practical Paper -Final-" (10th February, 2013)

<http://admin.interact->

[eu.net/downloads/7723/INTERACT\\_HARMONISED\\_IMPLEMENTATION\\_TOOLS\\_Practical\\_paper\\_for\\_programme\\_preparation\\_final\\_.pdf](http://admin.interact-eu.net/downloads/7723/INTERACT_HARMONISED_IMPLEMENTATION_TOOLS_Practical_paper_for_programme_preparation_final_.pdf) and "Monitoring and Evaluation of European Cohesion Policy– European Regional Development Fund and Cohesion Fund - Concepts and Recommendations", Guidance document, European Commission Directorate – General Regional Policy: [http://ec.europa.eu/regional\\_policy/sources/docoffic/2014/working/wd\\_2014\\_en.pdf](http://ec.europa.eu/regional_policy/sources/docoffic/2014/working/wd_2014_en.pdf)

common challenges, experimentation, grounds for investments, improved policies and governance etc.

- **Being driven by jointly identified needs of the programme area:** “The starting point in designing any public intervention is to identify a problem to be addressed.” Priorities for cooperation should be based on the specific needs and characteristics of the programme area. They should be identified and agreed through a deliberative process between programme stakeholders. As part of this process, the pathway/ direction towards a desired change would also be identified.
- **Being result driven and performance oriented.** The result driven approach implies that for each programme area the desired change in the situation is identified which will represent a specific aspect of people’s well-being in the programme area. The intended result will also provide justification of policy intervention. The desired result will be supported by a limited number of result indicators which indicate what the target of programme intervention is. This will represent the basis of the intervention logic of the programme as it will set apart the specific planned intervention from other factors that will have an effect on the desired change

Europe 2020 strategy and the Cohesion Report highlight that, in the 2014-2020 programming period, programme design should set focus on performance rather than financial means.

Taking into account the above, and as mentioned in section 1.2., thematic concentration and result-oriented approach are the two key leading principles for drafting the Interreg MED Programme Intervention Logic.

### 1.3.2. Interreg MED Intervention logic

In previous periods, the traditional framework was unclear on the distinction between inputs, outputs, results and outcomes. In the period 2014-2020, it has been substituted by a logical framework that underpins the intervention logic of each chosen priority of the Cooperation Programme. The aforementioned thematic concentration and result orientation are both reflected in the Programme intervention logic.

**The Programme intervention logic can be defined as the theoretical framework that structures and visualises the entire logical and sequential process from defining the thematic objectives, investment priorities, priority axis and specific objectives until the results that should ultimately be achieved.**

Priority axes are the building blocks of the Programme. Each priority axis includes one or more investment priorities. The specific objective is the expression of what each investment priority aims to achieve. The change sought by the specific objective is expressed in one result indicator. More specifically, for each priority, the following logic should be assumed<sup>9</sup>:

- To start with, a problem (need) to be addressed by joint action is identified -> Selection of thematic objectives, investment priorities and corresponding specific objectives;
- This informs the definition of the intended result (policy objective reflecting the change in the socio-economic situation) to be modified by interventions. For this, result indicators

<sup>9</sup> “Monitoring and Evaluation of European Cohesion Policy– European Regional Development Fund and Cohesion Fund - Concepts and Recommendations”, Guidance document, European Commission Directorate –General Regional Policy: [http://ec.europa.eu/regional\\_policy/sources/docoffic/2014/working/wd\\_2014\\_en.pdf](http://ec.europa.eu/regional_policy/sources/docoffic/2014/working/wd_2014_en.pdf)

(appropriate variables that represent the intended result) are selected and defined by baseline and target;

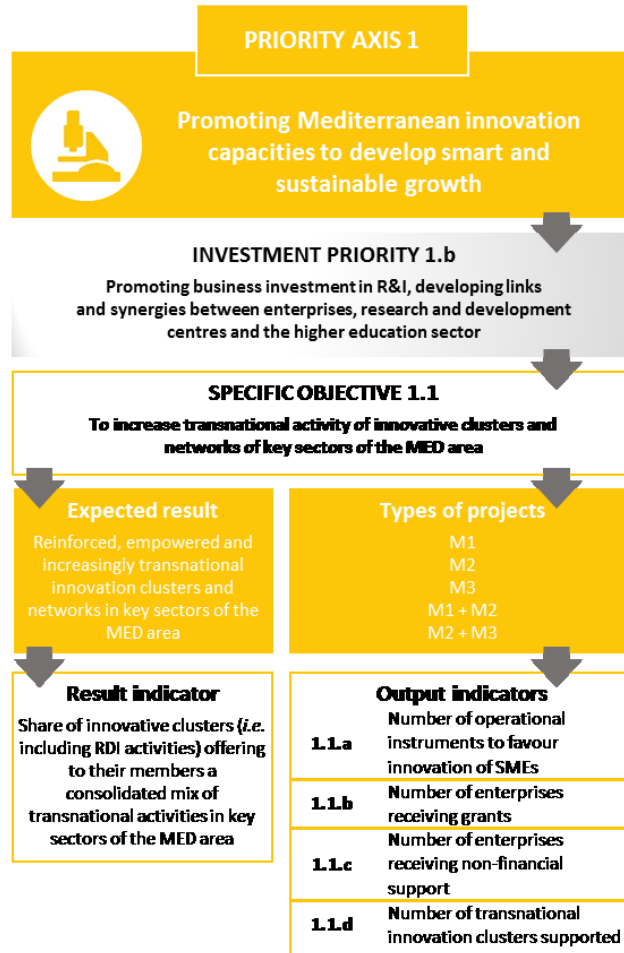
- Different factors can drive the change – the Programme selects factors to be direct products of interventions (outputs) and explain how these contribute to results.

This is then completed by the definition of actions to be supported that will deliver the outputs and lead to the attainment of the specific objectives and results. Corresponding categories of intervention have been listed and output indicators chosen.

An outline of the priority axes and the specific objectives is provided in [section 1.1](#) on strategic priorities and specific objectives.

A visualisation of the full programme intervention logic is provided hereafter.

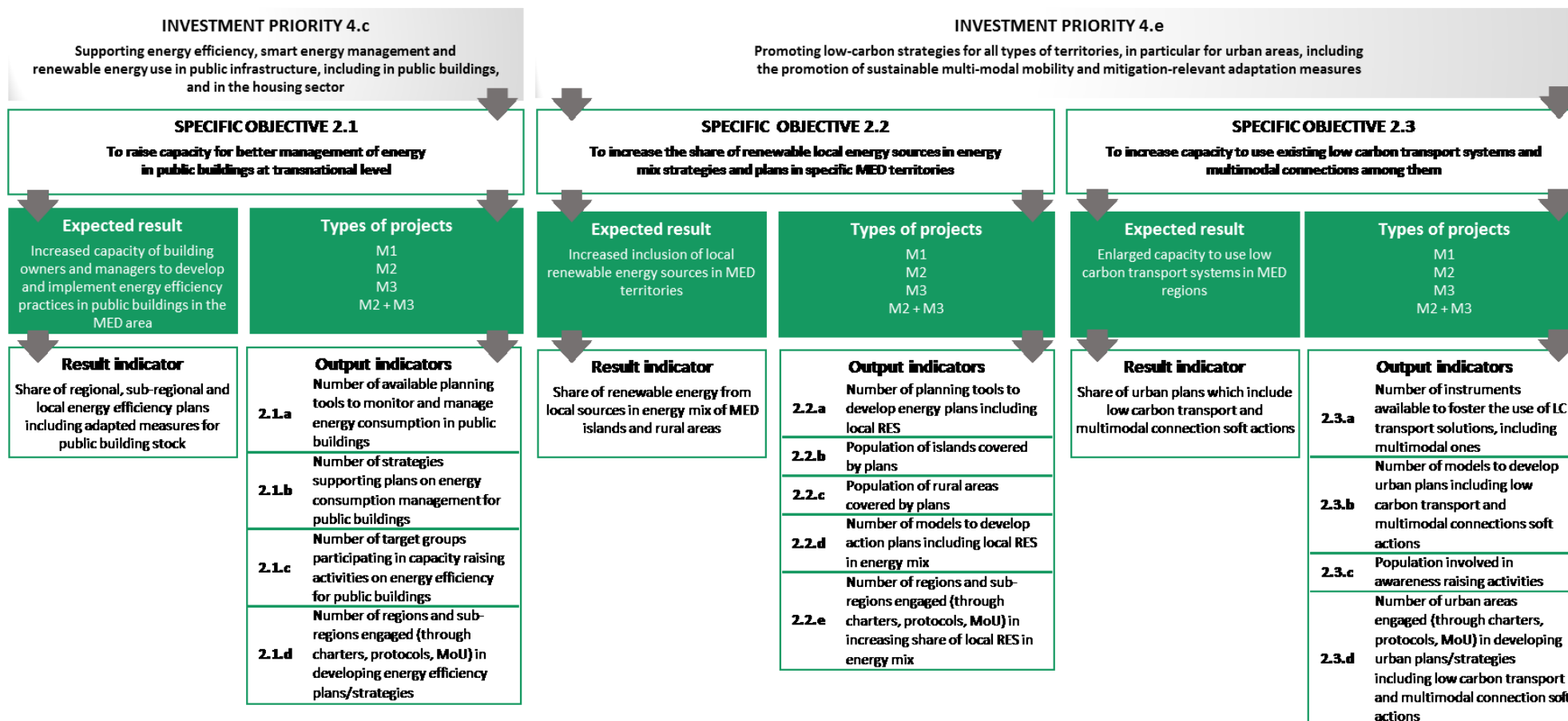
FIGURE 7: PROGRAMME INTERVENTION LOGIC

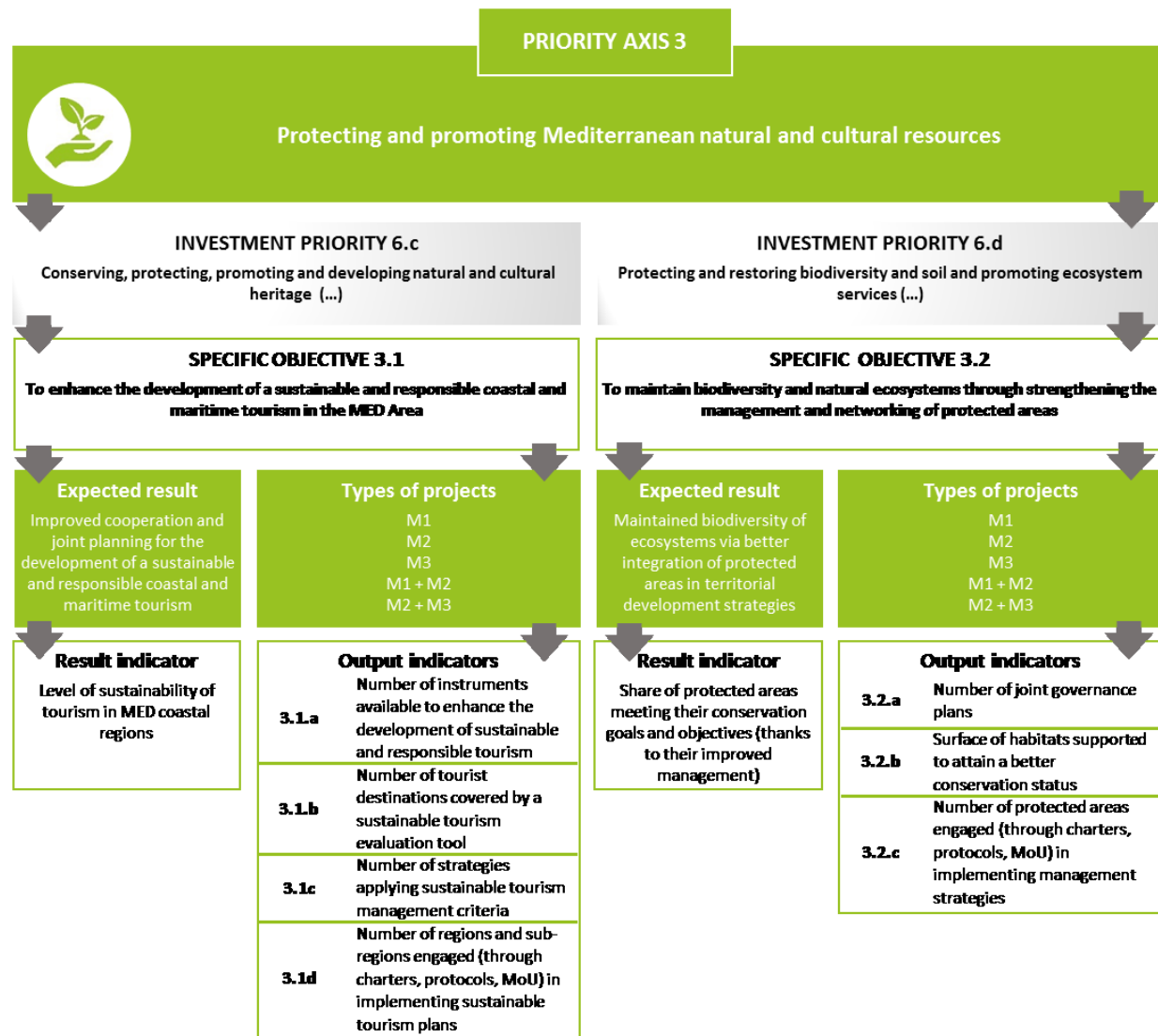


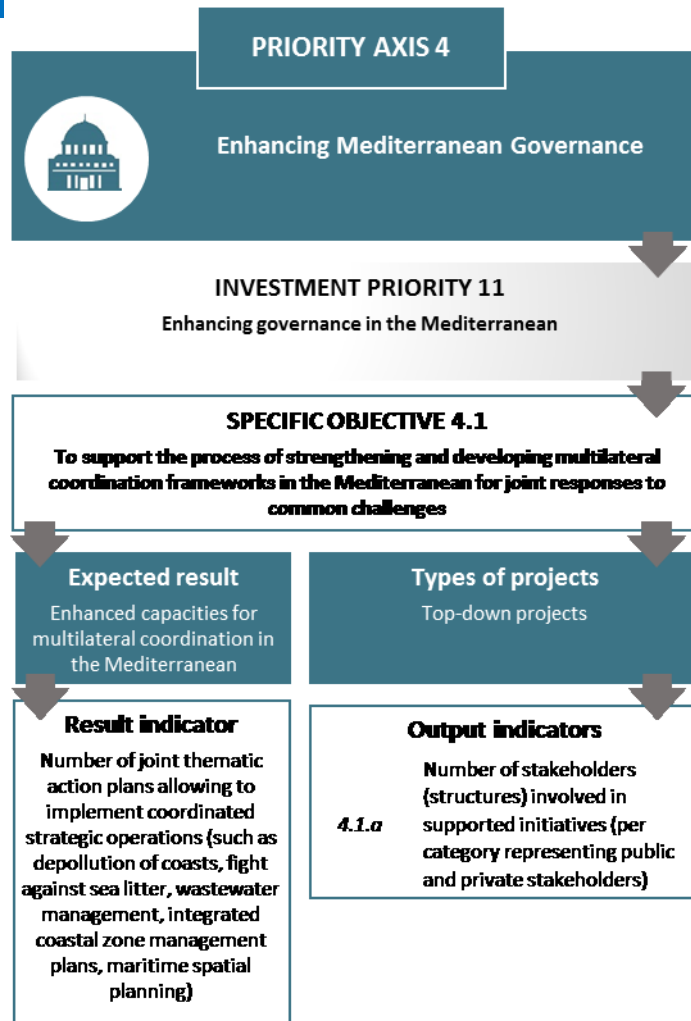
PRIORITY AXIS 2



Fostering low-carbon strategies and energy efficiency in specific MED territories: cities, islands and rural areas









### 1.3.3. Programme result indicators

Result indicators are an expression of the objective of an investment priority. In other words, result indicators express the change sought by a specific objective on the whole Interreg MED area. Thus, they are programme-specific and meet certain quality criteria, as expressed in the CPR regulation (annex IV):

- a) Responsive to policy: closely linked to the policy interventions supported;
- b) Normative: having a clear and accepted normative interpretation;
- c) Robust: reliable, statistically validated;
- d) Timely collection of data: available when needed, with room built in for debate and for revision when needed and justified.

Each result indicator requires a baseline value<sup>10</sup> and a target value for 2022 (art. 6, ERDF Regulation, art. 4, CF Regulation; art. 15, ETC regulation).

Interreg MED result indicators are all expressed in quantitative terms. Specific methodologies were developed to define the baseline for each one of the result indicators, using the latest available data. Regarding target values, the following factors have been taken into account:

- Evaluation of the trend (how the situation will change if no MED actions);
- Estimation of MED impact on the indicator, with targets proportionate to the amount of funding available for each priority axis:
  - direct impact, based on MED projects output indicators and MED future partners;
  - indirect impact, based on the influence of MED projects results on the target population not directly partner of the projects.

Result indicators can inform the decision on project selection criteria because projects should be able to demonstrate how they will contribute to the achievement of the objectives of a priority.

For each Specific Objective result indicator, a summary of the methodology applied to define the baseline values is provided hereafter, reminding the baseline and target values fixed in the Interreg MED Cooperation Programme.

#### **SPECIFIC OBJECTIVE 1.1.: TO INCREASE TRANSNATIONAL ACTIVITY OF INNOVATIVE CLUSTERS AND NETWORKS OF KEY SECTORS OF THE MED AREA**

**RESULT INDICATOR:** Share of innovative clusters (i.e. including R&D activities) offering to their members a consolidated mix of transnational activities in key sectors of the MED area.

**BASELINE VALUE:** Current % of innovative clusters that offered to their members a consolidated mix of activities, transnational services and tools.

**MEASUREMENT UNIT:** Innovative clusters (%).

Given the population and the innovative clusters in the key sectors (Blue and Green growth, social innovation and creative industries) of the MED area, it can be expected that almost all of them have established relationships beyond their boundaries. However, a cluster can be considered as implementing international operations only if it offers a consolidated mix of activities, tools and cross-border services to its members, as the "consolidated mix" allows distinguishing the clusters

---

<sup>10</sup> A baseline is the value of a result indicator at the beginning of the programming period

by means of an expanded offer that makes possible a real internationalisation of their businesses as well as of the businesses that are still at a first stage of a cross-border cooperation.

The baseline value has been calculated through a survey launched towards innovative clusters. 5 types of services, tools and activities aiming at the internationalisation of cluster members were identified (based on TACTICS studies, the European Cluster Observatory and the EU cluster portal) for assessing the transnational activity of the clusters: Knowledge and Market Access, Capacity Building, International Trade and partnering, Financial Opportunities, International Cooperation and Networking.

It came out from the survey that 50% of innovative clusters of the MED area offer to their members a consolidated mix of transnational activities, services and tools. The target set for 2022 has been fixed to 66%.

#### **SPECIFIC OBJECTIVE 2.1: TO RAISE CAPACITY FOR BETTER MANAGEMENT OF ENERGY IN PUBLIC BUILDINGS AT TRANSNATIONAL LEVEL**

**RESULT INDICATOR:** Share of regional, sub-regional and local (RSL) energy efficiency plans including adapted measures for public building stock.

**BASELINE VALUE:** current % of plans on energy efficiency including adapted initiatives on the public buildings stock.

**MEASUREMENT UNIT:** regional and local sustainable energy action plans including measures that reach a minimum threshold of quality (%).

Taking into consideration that the specific objective is to *reinforce the capacities of public administrations to optimise energy planning measures leading to a reduction of energy consumption and a better management of energy in public buildings*, and the main change sought is an increase of the capacity of owners and managers of public buildings to elaborate and implement energy efficiency practices, the indicator aims to check the growth / quality of management capacities. Having as measurement unit regional and local action plans allows to reflect the enhanced capacities, through the measurement of the evolution of plans with appropriate measures.

In other words, the baseline value is based on the % of plans in which the measures relating to public building stock got a minimum score. All regional sustainable energy plans of the MED area were analysed, and a sample of local Sustainable Energy Action Plans (SEAPs), following a dedicated questionnaire.

Baseline values: 16% for Regional plans, 29% for local plans

Target values: 34% for Regional plans, 39% for local plans

#### **SPECIFIC OBJECTIVE 2.2.: TO INCREASE LOCAL RENEWABLE ENERGY SOURCES IN THE ENERGY MIX PLANS AND STRATEGIES OF SPECIFIC MED TERRITORIES**

**RESULT INDICATOR:** Share of renewable energy from local sources in the MED area energy mix of islands and rural areas.

**BASELINE VALUE:** % of local RES in energy mix strategies in islands and in rural areas.

**MEASUREMENT UNIT:** local RES in energy mix strategies (%).

As data at regional and local level was hard to retrieve, a sample of local Sustainable Energy Action Plans were studied to identify both baseline and target values for islands on the one hand, and for rural areas on the other hand. An average has been calculated to determine each value.

Baseline values: 7,28% for rural areas, 7,24% for islands.

Target values: 8,78% for rural areas, 19,77% for islands.

**SPECIFIC OBJECTIVE 2.3.:** TO INCREASE CAPACITY TO USE EXISTING LOW CARBON TRANSPORT SYSTEMS AND MULTIMODAL CONNECTIONS AMONG THEM

**RESULT INDICATOR:** Share of urban plans which include low carbon transport and multimodal connections soft actions.

**BASELINE VALUE:** % of current plans including soft actions oriented towards low carbon transport system.

**MEASUREMENT UNIT:** Plans providing soft actions oriented towards low carbon transport (%).

The choice of focusing on plans relates to the fact that low carbon transport, mobility and multimodal connections are topics generally tackled through planning: the Commission is supporting the sustainable Urban Mobility Plan concept and the Covenant of Mayors initiative with Sustainable Energy Action Plans covering transport issues.

A sample of SEAPs have been analysed, following a dedicated questionnaire, to assess the share of plans with actions regarding low carbon transport and multimodal connections.

Baseline value: 23% of plans regarding urban areas.

Target value: 47% of plans regarding urban areas.

**SPECIFIC OBJECTIVE 3.1.:** TO ENHANCE THE DEVELOPMENT OF A SUSTAINABLE AND RESPONSIBLE COASTAL AND MARITIME TOURISM IN THE MED AREA

**RESULT INDICATOR:** Level of sustainability of tourism in MED coastal regions.

**BASELINE VALUE:** current level of sustainability of tourism in MED coastal regions.

**MEASUREMENT UNIT:** percentage.

This indicator allows measuring the evolution of the sustainability of tourism in MED coastal areas, thus reflecting the enhancement of the development of sustainable coastal and maritime tourism in the MED area. In order to assess the level of sustainability of tourism, the impact of tourism, and mainly tourism pressures, on the 3 dimensions of sustainability – economic, social and environmental – has been taken into account. To calculate the baseline, a set of **10 indicators** based on the ETIS (European Tourism indicator System for sustainable management at Destination level) and the Global Tourism Council indicators (GSTC) were identified, corresponding to 10 criteria: sustainable Tourism Public Policy, Sustainable Tourism Management (labels), Tourism Enterprise(s) Performance, Quantity of Employee, Community/Social Impact, Protecting and Enhancing Cultural Heritage, Climate Change, Solid Waste Management, Landscape and Biodiversity Management, Bathing Water Quality.

The sources used to collect the data required for the calculation of the 10 MED indicators are mainly EUROSTAT, UNESCO, Natura 2000, MedPAN and EEA databases and tables and in some cases national or regional website sources.

Each criteria has been selected according to the available data on the internet sources listed above.

Baseline value: 26,7%.

Target value: 35,8%.

**SPECIFIC OBJECTIVE 3.2: TO MAINTAIN BIODIVERSITY AND NATURAL ECOSYSTEMS THROUGH STRENGTHENING THE MANAGEMENT AND NETWORKING OF PROTECTED AREAS**

**RESULT INDICATOR:** Share of protected areas meeting their conservation goals and objectives (thanks to their improved management).

**BASELINE VALUE:** current % of protected areas matching their conservation goals via improved management.

**MEASUREMENT UNIT:** Marine protected areas and land-based NATURA 2000 sites (%)  
MEDPAN MAPAMED database and Natura 2000 database have been used to collect data regarding 4 criteria used to assess the share of protected areas matching their conservation goals: pressures and risks, cooperation, management plan, staffing.

Baseline values: 65% for maritime protected areas, 73,5% for land-based NATURA 2000 sites.

Target values: 80% for maritime protected areas, 85% for land-based NATURA 2000 sites.

**SPECIFIC OBJECTIVE 4.1.: TO SUPPORT THE PROCESS OF STRENGTHENING AND DEVELOPING MULTILATERAL COORDINATION FRAMEWORKS IN THE MEDITERRANEAN FOR JOINT RESPONSES TO COMMON CHALLENGES**

**RESULT INDICATOR:** Number of joint thematic action plans allowing to implement coordinated strategic operations.

**BASELINE VALUE:** Number of joint action plans in the Mediterranean basin.

**MEASUREMENT UNIT:** Joint action plans (number).

Existing joint action plans covering the MED area have been mapped out.

Baseline value: 7 action plans.

Target value: Target value for 2022 has to be computed according to priority topics addressed by CP MED's calls for projects on one hand, forecast of potential development of new specific and thematic strategic approaches on the MED area on the other hand. The target is set out at 10.

## 1.3.4. Programme output indicators

Outputs indicators are used to measure the direct products (outputs) of supported projects, which in turn contribute to results.

### COMMON OUTPUT INDICATORS AND PROGRAMME SPECIFIC OUTPUT INDICATORS

When applicable, the Programme used output indicators from the list of Common output indicators, as set out in Annex of ETC Regulation (No 1203/2013). Where common output indicators could not be applied, programme-specific output indicators have been identified.

Baselines for output indicators have been set at zero and targets for 2023.

### PROGRAMME PERFORMANCE FRAMEWORK

The performance framework is the basis which the European Commission will use to assess the performance of the Programme<sup>11</sup>. It includes one content output indicator per Specific Objective

---

<sup>11</sup> Article 20, Regulation (EU) No 1303/2013 of the European Parliament and of the Council of 17 December 2013 laying down common provisions on the European Regional Development Fund, the European Social Fund, the Cohesion Fund,

and one financial output indicator per Priority axis. Interim targets were fixed for 2018, and cumulative targets for 2023 for the output indicators included in the Performance Framework of the Programme.

#### OUTPUT INDICATORS PER SPECIFIC OBJECTIVE

To define the output indicators, the following criteria were systematically applied to ensure that output indicators would correspond to what the projects would produce: 1. Relevance, 2. Directness, 3. Inclusion, 4. Systematisation per type of indicator (means, models, targets and political commitment), 5. Systematisation per type of module.

To define the target values for output indicators, the following standards were applied:

- Definition of values as **realistic** as possible,
- Ensuring the **feasibility** of the computation,
- Taking into account the **transnational** feature of the programme, keeping in mind that the outputs would reflect most of the Programme production

Cumulative target values have been fixed for all output indicators.

When defining their outputs, projects should ensure their contribution to the Programme output indicators (for further information, please refer to the Programme Manual regarding Project Intervention Logic).

**FIGURE 8: INTERREG MED PROGRAMME OUTPUT INDICATORS**

SO	ID	Indicators	Measurement unit	Type of indicator	Target 2018	Target 2023	Included in the Performance framework
1.1	1.1.a	Number of operational instruments to favour innovation of SMEs	Instruments	Means	8	44	X
	1.1.b	Number of enterprises receiving grants	Enterprises	Target		35	
	1.1.c	Number of enterprises receiving non-financial support	Enterprises	Target		4.000	
	1.1.d	Number of transnational innovation clusters supported	Clusters	Target		10	
2.1	2.1.a	Number of available planning tools to manage and monitor energy consumption in public buildings	Tools	Means	3	5	X
	2.1.b	Number of strategies to develop energy consumption management plans for public buildings	Models	Models		5	

SO	ID	Indicators	Measurement unit	Type of indicator	Target 2018	Target 2023	Included in the Performance framework
	2.1.c	Number of targets participating in capacity raising activities on energy efficiency	Participants	Target		570	
	2.1.d	Number of regions and sub-regions engaged (through charters, protocols, MoU) in developing energy efficiency plans/strategies	Territories (NUTS 2 and 3 level)	Political commitment		176	
2.2	2.2.a	Number of planning tools to develop energy plans including local RES	Tools	Means	3	5	X
	2.2.b	Population of islands covered by plans	Population	Target		1.600.000	
	2.2.c	Population of rural areas covered by plans	Population	Target		1.200.000	
	2.3.d	Number of models to develop action plans including local RES in energy mix	Models	Models		5	
	2.4.e	Number of regions and sub-regions engaged (through charters, protocols, MoU) in increasing share of local RES in energy mix	Territories (NUTS 2 and 3 level)	Target		192	
2.3	2.3.a	Number of instruments available to foster the use of LC transport solutions, including multimodal ones	Instruments	Means	3	5	X
	2.3.b	Number of models to develop urban plans including low carbon transport and multimodal connections soft actions	Models	Models		10	
	2.3.c	Population involved in awareness raising activities	Population	Target		300.000	
	2.3.d	Number of urban areas engaged (through charters, protocols, MoU) in developing urban plans/strategies including low carbon transport and multimodal connections soft actions	Territories (NUTS 3)	Political commitment		80	
3.1	3.1.a	Number of instruments available to enhance the development of sustainable and responsible tourism	Instruments	Means	10	17	X
	3.1.b	Number of tourist destinations covered by a sustainable tourism evaluation tool	Territories (NUTS 2 and 3)	Target		108	
	3.1.c	Number of strategies applying sustainable tourism management criteria	Models	Models		11	
	3.1.d	Number of regions and sub-regions engaged (through charters, protocols, MoU) in implementing sustainable tourism plans	Territories (NUTS 2 and 3)	Political commitment		144	

SO	ID	Indicators	Measurement unit	Type of indicator	Target 2018	Target 2023	Included in the Performance framework
3.2	3.2.a	Number of joint governance plans	Plans	Means	18	36	X
	3.2.b	Surface of habitats supported to attain a better conservation status	Hectares	Target		1.250.000	
	3.2.c	Number of protected areas engaged (through charters, protocols, MoU) in implementing management strategies	Protected areas	Political commitment		50	
4.1	4.1.a	Number of stakeholders (structures) involved in supported initiatives (per category representing public and private stakeholders)	Organisations	Political commitment	200	1200	X