

# LLAPSI +

Language Learning and Parental Support for Integration



**Asylum, Migration and Integration Fund 2014 – 2020**

This project is part-financed by the European Union

Co-financing rate: 75% EU Funds 25% Beneficiary Funds

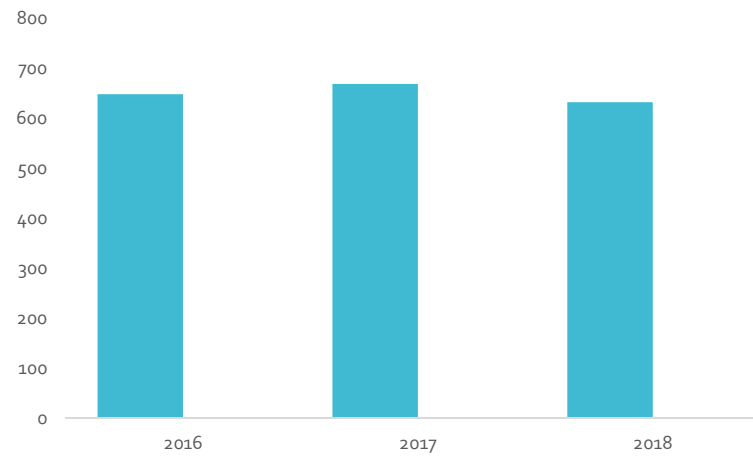
**Sustainable Management of Migration Flows**



MINISTRY FOR EDUCATION AND EMPLOYMENT

LLAPSI +

Number of new TCNs registrations for schooling in state schools in Malta (2016 – 2018):



LLAPSI +

New registrations for schooling (TCNs) from **January to May**:

Year	Total TCNs
2016	194
2017	196
2018	226
2019	249

LLAPSI +

Highest number of new TCN nationals registered for schooling in Malta from January – May 2019:

Syrian	32
Serbian	32
Indian	30
Philippine	20
Libyan	18

# LLAPSI + Capacity Building Components

## 1. Project Leadership, Management and Administration:

### Previous:

- Project Leader
- Project Coordinator
- Project Manager
- Project Finance Officer
- Front Desk Officer

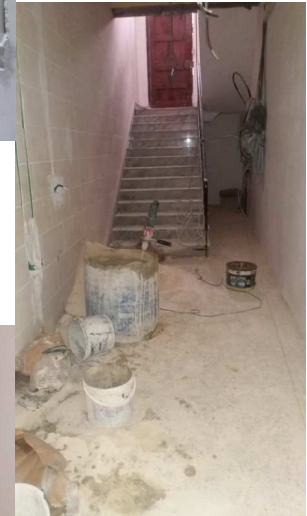
### Current:

- Project Leader
- Project Manager
- Project Officer (2)
- Front Desk Officer

# LLAPSI + Capacity Building Components



## 2. Site Refurbishing



# LLAPSI + Integration Components

## 1. Consolidation of previous LLAPSI Project actions:

Language teaching to newcomer TCN learners in schools

- Claims of Staff costs for 41 teachers, 4 Language Support Coordinators

Community Liaison Work

- Community Liaison Coordinator assigned
- 9 Community Liaison Workers recruited
- Psycho-Social and Educational needs Coordinator identified



At school....





# LLAPSI + Integration Components

## 2. Intensive Language Courses held during Summer (*Language 2 Go*):

- 2017 - 122 applications
- 2018 – 189 applications
- 2019 – course application launched

During the past 2 years the courses were offered from 4 different venues.

Most of the participants followed courses in both Maltese and English.

- Apportionment was applied.

# LLAPSI + Integration Components

- 3. **After School Clubs: The Making Friends, Bringing Friends Club**
- Scholastic year 2017 - 2018 – 3 clubs were held
- Scholastic year 2018 – 2019 – 4 clubs were held
- Clubs were held at Birzebbugia, Marsascalea, Birkirkara and Naxxar.
- A total of 12 clubs will be held during the lifetime of the project.



# LLAPSI + Integration Components

## 4. Online Maltese as a Foreign Language Tool

Preliminary Market Consultation issued in 2018 showed the need for more funding for this component. MEDE submitted a request to the Responsible Authority to allocate more funds for this component.

LLAPSI +

LLAPSI + Total Eligible Cost:

**€ 3.89m (for both Integration (NO 2) and Capacity (NO3))**

## Challenges:

- Apart from the unpredictability of the number of TCNs arriving in Malta and accessing educational provision, the following are the main challenging areas that the project has faced:
- Staff Turnover
- Lengthy procurement procedures
- Apportionment

LLAPSI +

Thank You!



**Asylum, Migration and Integration Fund 2014 – 2020**

This project is part-financed by the European Union

Co-financing rate: 75% EU Funds 25% Beneficiary Funds

**Sustainable Management of Migration Flows**

