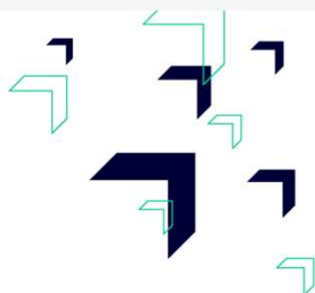




GOVERNMENT
OF MALTA



Rural Development Programme for Malta 2014-2020



Monitoring Committee
6 October 2023

Evaluation



Co-funded by
the European Union

1

Thematic Evaluations so far



- Evaluation on Young Farmers, presented to the MC in December 2021
- Evaluation on Soil – Erosion and Management, presented to the MC in March 2023
- Evaluation on Leader, presented to the MC in March 2023.
- Every year an Interim Evaluation Report which is prepared in parallel with the Annual Implementation.

2

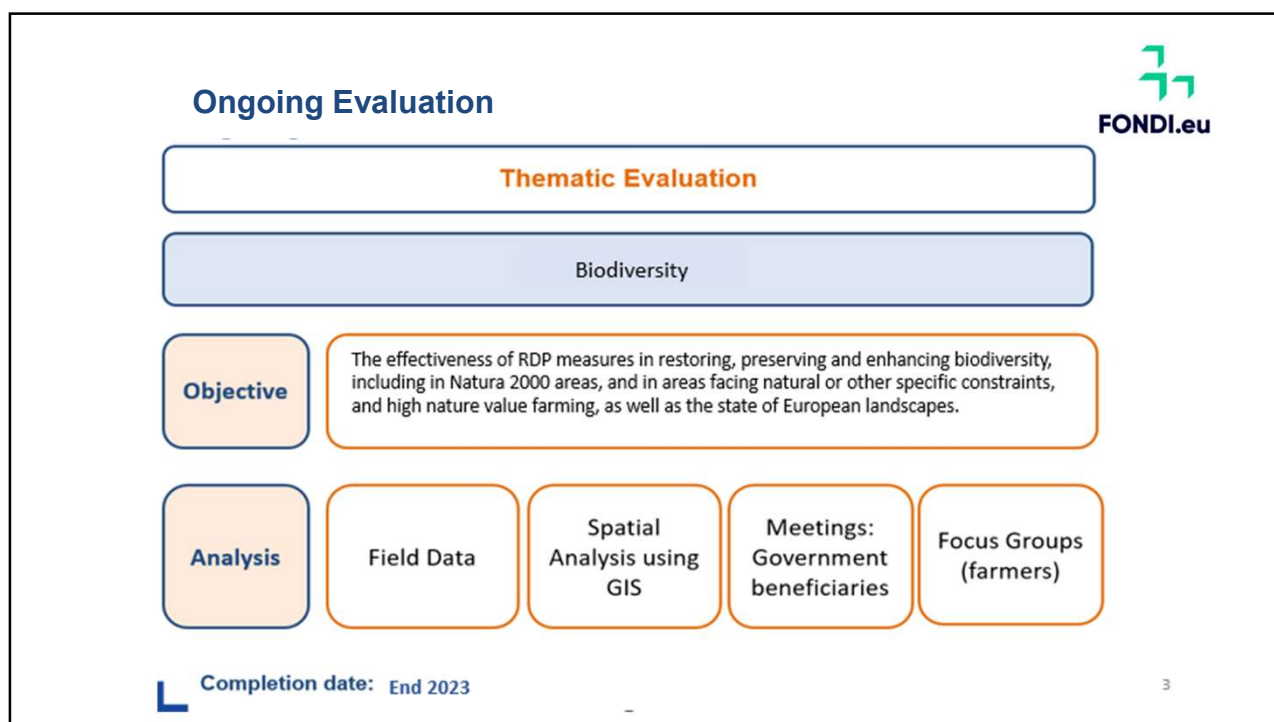
Ongoing Evaluations

3

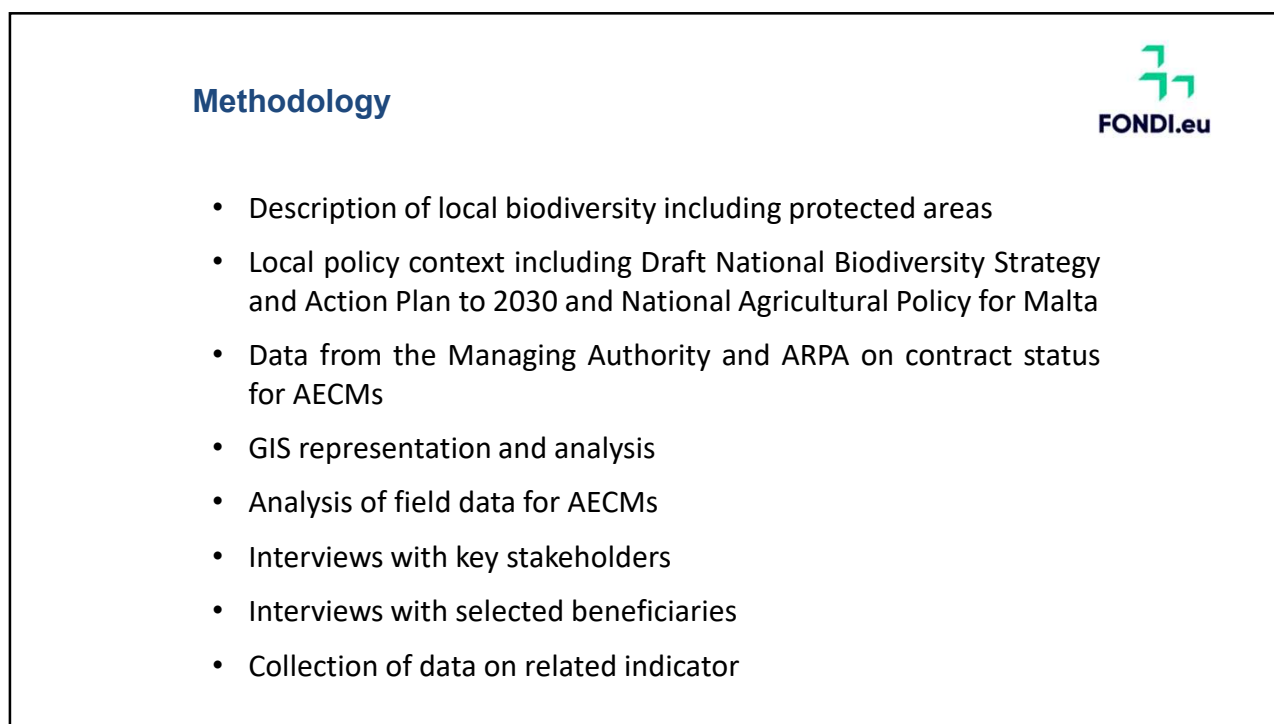
1. Thematic Evaluation on Biodiversity



4

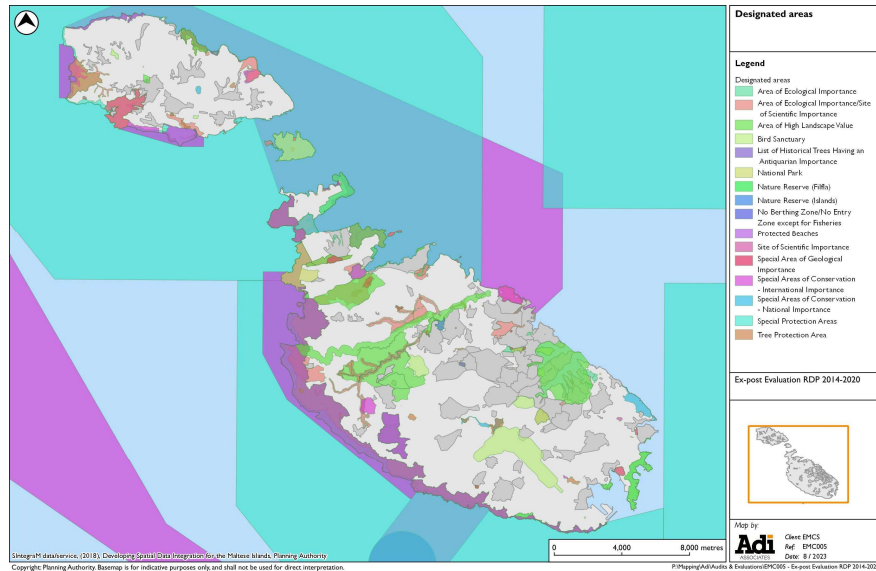


5



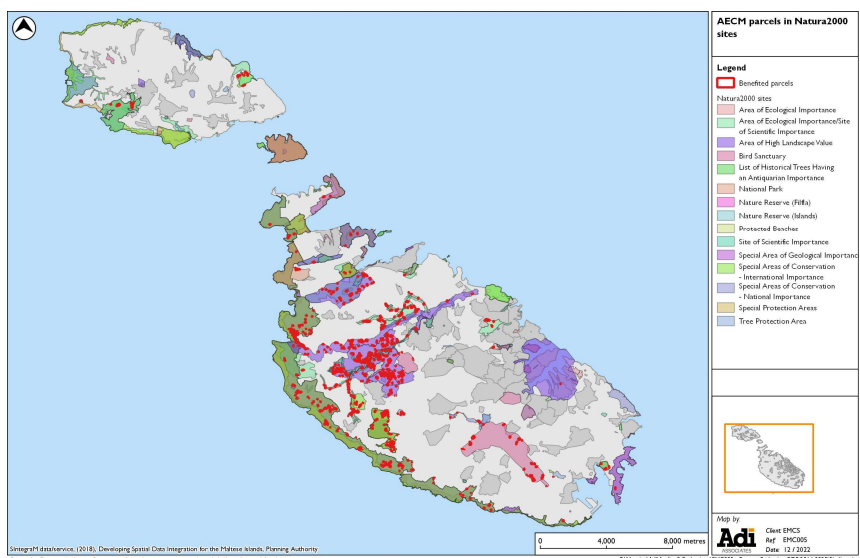
6

Visualization of Protected Areas



7

Spatial Analysis using GIS



8

2. AD HOC REPORT ON Secondary Contribution

9

AD HOC REPORT ON Secondary Contribution

Definition of Secondary Contributions

Secondary contributions are additional impacts of operations on focus areas other than those to which they are primarily allocated.

Objective of this ad hoc report:

- Showcase the full scope of rural development policy achievements.
- Highlight that while recorded expenditure may be classified under one Focus Area, there are investment components which contribute towards other focus areas (ex: a project funded under M4.1 composed of the purchase of a tractor, PV panels and water reservoir)

Suggested methodology:

To evaluate the secondary contributions, each expenditure component under different contracts will be analysed. This allows for an assessment of:

1. The different expenditure components under each measure
2. line-item components and their contribution to focus areas
3. Disbursement of expenditure distinguishing between primary and secondary contributions
4. Difference between programmed budget under each focus areas and progress on disbursement in relation to primary contributions.

The analysis on secondary contributions will determine whether contributions are being made towards other focus areas despite the limited expenditure registered under these areas.

10

Upcoming Thematic Evaluations

11

THEMATIC EVALUATION ON Competitiveness

CEQ 4: To what extent have RDP interventions contributed to improving the economic performance, restructuring and modernization of supported farms in particular through increasing their market participation and agricultural diversification?

This thematic evaluation is related to **Focus Area 2A**

The measures that primarily contribute to focus area 2A are the following:

- **Measure 2** - Support for advisory services
- **Measure 4.1** - Support for investment in agricultural holdings
- **Measure 4.3** - Support for investment in infrastructure related to development, modernisation, or adaptation of agriculture and forestry.
- **Measure 6.4** - Support for investment in creation and development of non-agricultural activities

The thematic Evaluation will mainly focus on measures 4.1 and 4.3, as the majority of progress for this Focus Area was attributed towards developments in these Measures. No progress was registered for Measure 2.2 and 6.4 as at 2022.

This Thematic Evaluation is expected to commence in November 2023 and will be finalised by the end of Q3 2024.

12

THEMATIC EVALUATION ON WATER



CEQ 11: To what extent have RDP interventions contributed to increasing efficiency in water use by agriculture?

This thematic evaluation is related to **Focus Area 5A**

The measures that primarily contribute to focus area 5A are the following:

- **Measure 1** : Support for Knowledge and information actions
- **Measure 2** : Support for Advisory services, farm management and farm relief services
- **Measure 4.1**: Support for investment in agricultural holdings
- **Measure 4.3**: Support for investment in infrastructure related to development, modernisation, or adaptation of agriculture and forestry
- **Measure 16.2**: Support for pilot projects, and for the development of new products, practices, processes and technologies

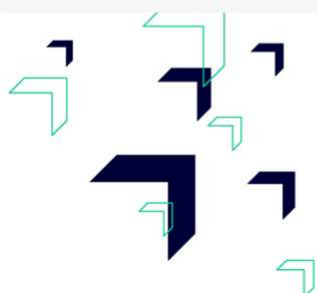
The thematic Evaluation will manly focus on measures 4.1 and 4.3, as the majority of progress for this Focus Area was attributed towards developments in these Measures.

This Thematic Evaluation is expected to commence in March 2024 and will be finalised by the end of Q4 2024.

13



Thank you for your attention



Co-funded by
the European Union

14

SKaM0



Indicators to be computed

Common result/target indicator:

- R7/T9 - % of agricultural land under management contracts supporting biodiversity and/or landscapes

The following other common indicators might be used to answer the CEQ:

Common output indicators (Data collected via the operations database):

- O5 total area (ha)
- O6 Physical area supported (ha)
- O7 No of contracts supported

Common context indicators:

- CCI 34 - Natura 2000 areas
- CCI 35 - Farmland bird index

SKaMO [@Cremona Colin at MEFL] Ind Farmers + Co-Cult +
Partnership + Companies should be collected under 1 umbrella
(Private Individuals (such as farmers))

Scicluna Kenneth at MEFL, 2023-03-09T04:29:16.955